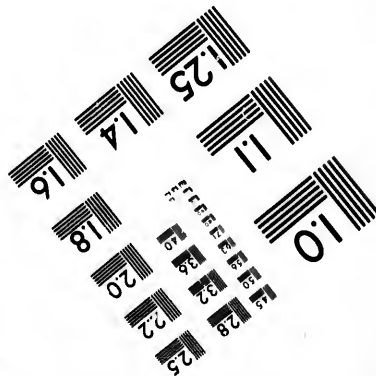
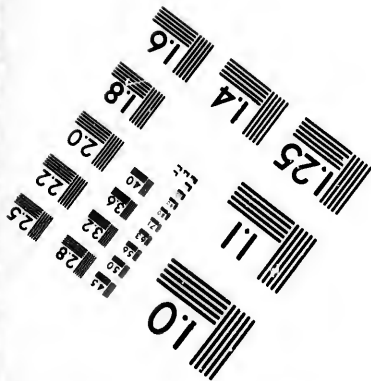
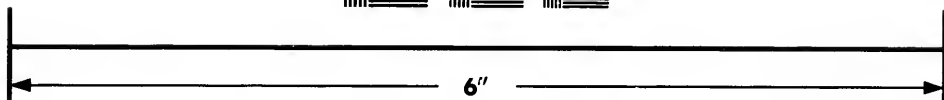
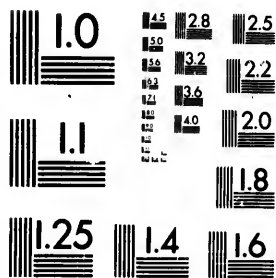


**IMAGE EVALUATION  
TEST TARGET (MT-3)**



**Photographic  
Sciences  
Corporation**

23 WEST MAIN STREET  
WEBSTER, N.Y. 14580  
(716) 872-4503

**CIHM/ICMH  
Microfiche  
Series.**

**CIHM/ICMH  
Collection de  
microfiches.**



Canadian Institute for Historical Microreproductions / Institut canadien de microreproductions historiques

**© 1985**



The copy filmed here has been reproduced thanks to the generosity of:

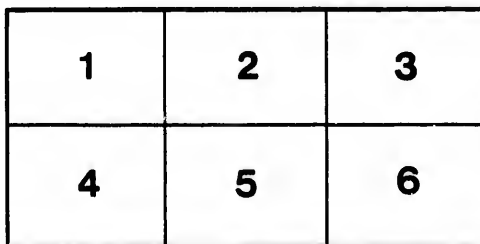
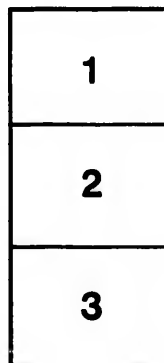
Medical Library  
McGill University  
Montreal

The images appearing here are the best quality possible considering the condition and legibility of the original copy and in keeping with the filming contract specifications.

Original copies in printed paper covers are filmed beginning with the front cover and ending on the last page with a printed or illustrated impression, or the back cover when appropriate. All other original copies are filmed beginning on the first page with a printed or illustrated impression, and ending on the last page with a printed or illustrated impression.

The last recorded frame on each microfiche shall contain the symbol  $\rightarrow$  (meaning "CONTINUED"), or the symbol  $\nabla$  (meaning "END"), whichever applies.

Maps, plates, charts, etc., may be filmed at different reduction ratios. Those too large to be entirely included in one exposure are filmed beginning in the upper left hand corner, left to right and top to bottom, as many frames as required. The following diagrams illustrate the method:



L'exemplaire filmé fut reproduit grâce à la générosité de:

Medical Library  
McGill University  
Montreal

Les images suivantes ont été reproduites avec le plus grand soin, compte tenu de la condition et de la netteté de l'exemplaire filmé, et en conformité avec les conditions du contrat de filmage.

Les exemplaires originaux dont la couverture en papier est imprimée sont filmés en commençant par le premier plat et en terminant soit par la dernière page qui comporte une empreinte d'impression ou d'illustration, soit par le second plat, selon le cas. Tous les autres exemplaires originaux sont filmés en commençant par la première page qui comporte une empreinte d'impression ou d'illustration et en terminant par la dernière page qui comporte une telle empreinte.

Un des symboles suivants apparaîtra sur la dernière image de chaque microfiche, selon le cas: le symbole  $\rightarrow$  signifie "A SUIVRE", le symbole  $\nabla$  signifie "FIN".

Les cartes, planches, tableaux, etc., peuvent être filmés à des taux de réduction différents. Lorsque le document est trop grand pour être reproduit en un seul cliché, il est filmé à partir de l'angle supérieur gauche, de gauche à droite, et de haut en bas, en prenant le nombre d'images nécessaire. Les diagrammes suivants illustrent la méthode.

Ad. 522/15

# McGill University.

MONTREAL.

## ELECTION FOR REPRESENTATIVE FELLOWS.

*Extract from the Statutes of the University.*

### CHAPTER V.

Voting papers, with all requisite instructions, shall be duly sent by mail to all such qualified Graduates, or at their request otherwise furnished them, as by Regulation of the Governors in that behalf shall hereafter be prescribed.

*Extract from Regulations of the Board of Governors for Election of Fellows under Chap. V. of the Statutes of the University.*

1. "The Secretary shall receive all Statutory Fees whether annual or for commutation, either personally or by letter, from the graduates desiring to vote, and not from any third party, except as bearer of a written authorization."

2. The voting papers sent in by graduates shall be regarded as confidential, and no communication respecting them shall be made by Secretary or Scrutineers, except when authorized by vote of the Governors or Corporation.

†3. From and after the election of 1888 no annual fees will be accepted, but each graduate desiring to vote will be required to transmit to the Secretary, on or before the first day of March in the year in which he desires to vote, the full amount of \*\$2.50 as payment of his Registration Fee in perpetuity. Provided always that in the event of any graduate having paid for one or more years previous, the amounts so paid shall be deducted from his payment of \$2.50.

†As amended by the Board of Governors, January, 1896.

[OVER.]

\*NOTE.—Registration Fee as above, - \$2.50  
Less amount of former payments, \_\_\_\_\_

Balance, - - \_\_\_\_\_

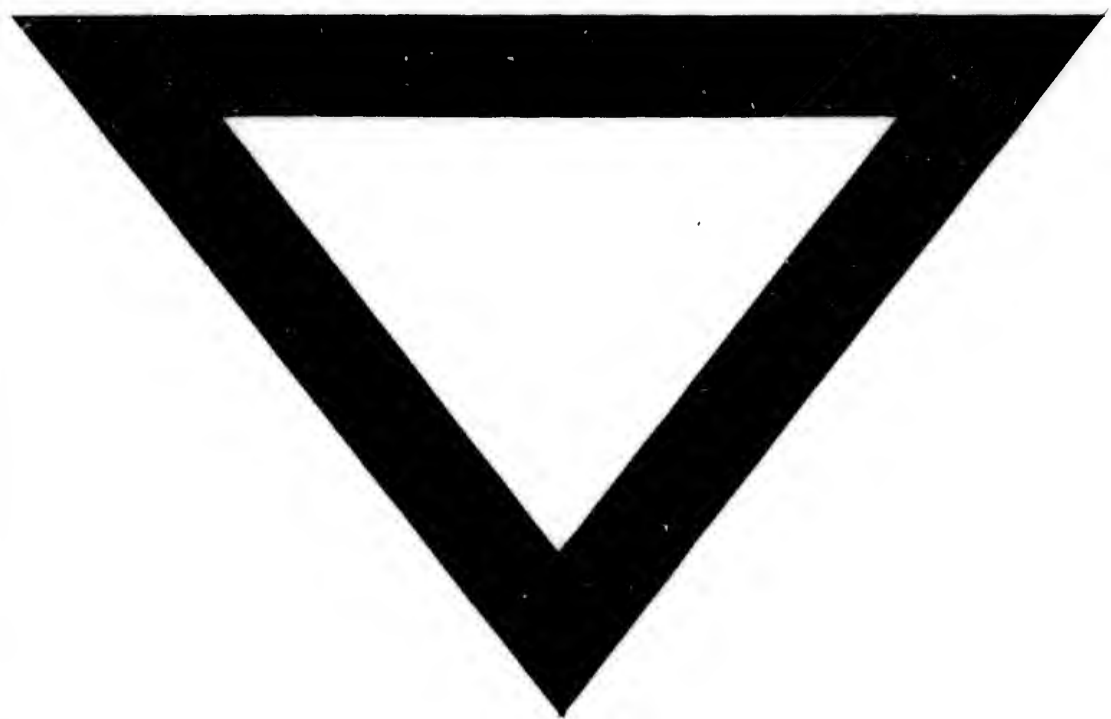
MONTREAL, Feb., 1896.

*Extract from the Statutes of the University.*

CHAPTER III.

The Fellows of the University shall be—

- (1) The Deans of the respective Faculties,—
- (2) Any Acting or Vice-Dean of Faculty, or any Registrar of the Faculty of Law or Medicine, whom the Governors may find it requisite to appoint as such Fellows,—not more than one such appointment, however, to subsist at any time for any Faculty,—
- (3) Four Members of the Faculty of Arts, and one Member of each of the other Faculties, to be elected as such from time to time for a term of four years by their respective Faculties.—
- (4) The Principal of the McGill Normal School, so long as it shall remain affiliated with the University,—
- (5) The several representatives of every Affiliated College in connection with the University, to be named as hereinafter is provided,—
- (6) **Nine Members of Convocation, Graduates of the University, two in Law, two in Medicine, two in Arts, two in Applied Science, and one in Comparative Medicine and Veterinary Science, to be elected by the qualified Graduate Members of Convocation, from time to time as hereinafter is provided,—**
- (7) Such other members of Convocation, not more than seven in number, as the Governors may so appoint, for the term of four years,—
- (8) The Chairman of the Protestant Board of School Commissioners, for the City of Montreal, if so appointed by the Governors, but not otherwise.



# FACULTY OF MEDICINE.

McGILL UNIVERSITY.

---

## WINTER SESSION.

THE instruction in Anatomy will consist of—

- I. A Course of Lectures on Systematic Anatomy.
  - II. Special Demonstrations on Regional and Topographical Anatomy.
  - III. Dissections and Dissecting-room Demonstrations.
- 

## SUMMER SESSION.

During the first six weeks of the Summer Season a Course of Dissections will be given.

---

## TEXT BOOKS.

FOR SYSTEMATIC ANATOMY, any of the following:—

- Quain's Anatomy.
- Gray's Anatomy.
- Macalister's Anatomy.

FOR PRACTICAL ANATOMY AND DISSECTING-ROOM WORK.

- Ellis's Demonstrations of Anatomy.
- Heath's Practical Anatomy.
- Cunningham's Practical Anatomy.



### WORKS OF REFERENCE.

Osteology, . . .	{	Holden's Osteology. Humphry on the Skeleton.
Embryology, . .	{	Foster and Balfour's Elements of Embryology. Balfour's Comparative Embryology.
Arterial System,	{	Power on the Arteries. (Third Edition, by Mr. William Thomson.)

It is necessary for the Student to have a Text-book of Systematic Anatomy, and a Text-book of Practical Anatomy. Any of the other works he can consult in the Library.

---

### ARRANGEMENTS FOR THE PRACTICAL STUDY OF OSTEOLOGY.

The Skeleton may be studied practically in the Bone-room, where the Student will find typical specimens of the bones mounted on blocks. He can obtain from one of the Demonstrators any bone or bones he may wish to study, by giving a receipt. These bones must not be removed from the Anatomical Department on any pretence whatever; the Student may, however, keep the bones in his box for a period not exceeding one week, but at the end of that time he should return the bones and claim his receipt. The advantage of combining the study of the bones with the

investigation of the soft parts is strongly urged on the Student—in fact, no dissection should be carried on without having the appropriate bones at hand for reference and comparison: for example, the Dissector of the axilla should be provided with a clavicle, a scapula, and a humerus, and should constantly refer to these bones during his dissection.

Every student is advised to purchase a set of bones for his own private use.

---

### PREPARATIONS OF THE SOFT PARTS.

In addition to the permanently mounted Dissections and frozen Sections, which may be studied in the Demonstration room, a number of specially dissected parts are available for members of the Class who may be waiting for Subjects or preparing for Examinations.

---

### HINTS TO STUDENTS EMPLOYED IN DISSECTION

#### I.—ENTRY OF NAMES FOR PARTS.

(1). As parts are allotted as far as possible in the order of entry, Students are urged to enter their names in the Dissecting book as early in the session as possible.

(2). No Student can have his name entered for more than one part at a time.

(3). Before a Student can obtain a part he must report himself as *ready* to begin it.

## II.—PRESERVATION OF PARTS.

Each Student should provide himself with a bottle of Methylated Spirit, with pure Carbohc Acid added to it in the proportion of 1 to 15. As soon as the part is allotted, it should be carefully covered by a bandage or a piece of cotton cloth soaked in this mixture. An oil-cloth wrapper should then be applied. The integument should, in all cases, be retained, and after each day's work replaced, and held in position by a stitch. Between the Integument and the Dissection beneath, a piece of cloth soaked in the Preservative Fluid should be placed.

By attending to these suggestions, the Student will add very materially to his comfort in Dissecting.

As soon as the brain is removed from a Subject it should be handed to one of the Demonstrators, who will, if the brain is in good condition, preserve it for future use.

The Spirit and Carbohc Mixture for the preservation of parts can be had from Mr. Cook at the rate of            per quart.

This mixture (the strength of the spirit being 60 over proof) is too strong for ordinary use, and should therefore be diluted with one-third of water, except when used for the purpose of redeeming a bad subject.

## III.—REGULARITY OF WORK.

Students are especially requested to work steadily and without the intermission of a single day, so long as the Limbs are attached to the Trunk. During this period

each student is, as it were, the member of a society, and he cannot stop his own work without interfering with that of his fellow-Dissectors.

Thus, when the Subject is lying on its Face, the Dissectors of the Upper Limbs must complete their share of the Dissection of the back in two days, so as to allow the Dissectors of the Head and Neck to finish what remains of the Back before the Body is turned. On the other hand, the Dissectors of the Lower Limbs will find that it will take all the time at their disposal to dissect the Gluteal Region, the Popliteal Space, and the back of the Thigh before the Subject is turned.

When the Subject is placed on its back, the Dissectors of the Head and Neck must finish the Dissection of the Posterior Triangles, and the Dissectors of the Upper Limbs must complete the Dissection of the Axillary Spaces in four days, so that they may begin work on the Thorax.

#### IV.

Each Student will be provided with a Dissecting-room card on which are spaces for the initials of the Demonstrators, given after a satisfactory examination on the Student's *own* part.

Every Student *must* pass three satisfactory examinations on each part dissected ; at the close of the session the card should be handed to the Professor of Anatomy. No schedule will be signed by the Professor of Anatomy unless the Student's card is properly initialed by one of the Demonstrators.

### V.—CHANGES IN THE POSITION OF THE SUBJECT.

Each Subject is numbered, and the dates upon which its position is to be changed are posted on the Notice-board.

Students are not allowed to change the position of a Subject on their own responsibility.

Each male Subject, on being brought into the Dissecting-room, will be placed on its back for a short time *before* it is tied up in the lithotomy position, in order that the Student may practise passing the staff. The Dissectors of the Abdomen are requested to attend, for this purpose, before eleven o'clock.

### VI.—INSTRUMENTS.

The Dissecting-case employed by Students should be furnished with the following instruments:—

(1). Four to six Scalpels; very large or very small Scalpels are to be avoided. The shape, also, is important. Scalpels in which the point is on a line with the back, or which do not taper sufficiently towards the point, are a great obstacle to good work.

(2). A good-sized pair of Dissecting Forceps. In selecting these, care must be taken to choose a pair in which the spring is not too weak. The Student should also be careful to see that the teeth of the Forceps interlock accurately for their whole length, without applying so much force as to fatigue the hand while dissecting.

(3). A pair of strong Hooks, fastened one at either end of a stout chain.

(4). A pair of sharp-pointed Scissors.

(5). A Blow-pipe.

(6). A needle.

COMPILED  
FOR THE  
USE OF STUDENTS ATTENDING THE PRACTICAL  
ANATOMY CLASS  
OF THE  
*Medical Faculty of McGill University.*

---

**DISSECTION OF UPPER LIMB.**

**Body on Face for 4 Days.**

**1st Day.**

**Superficial Fascia and Cutaneous Nerves of Back.**

**Trapezius.**

**2nd Day.**

**Latissimus Dorsi.**

Reflect Trapezius in conjunction with dissectors of Head and Neck

Nerve supply to Trapezius, Transversalis Colli Artery and Branches.

**Rhomboids** and nerve-supply.

**Levator Anguli Scapulæ** and **Omo-Hyoid.**

**Supra-Scapular Artery and Nerve.**

Reflect Latissimus dorsi and Rhomboids.

Follow **Posterior Scapular Artery** to its termination.